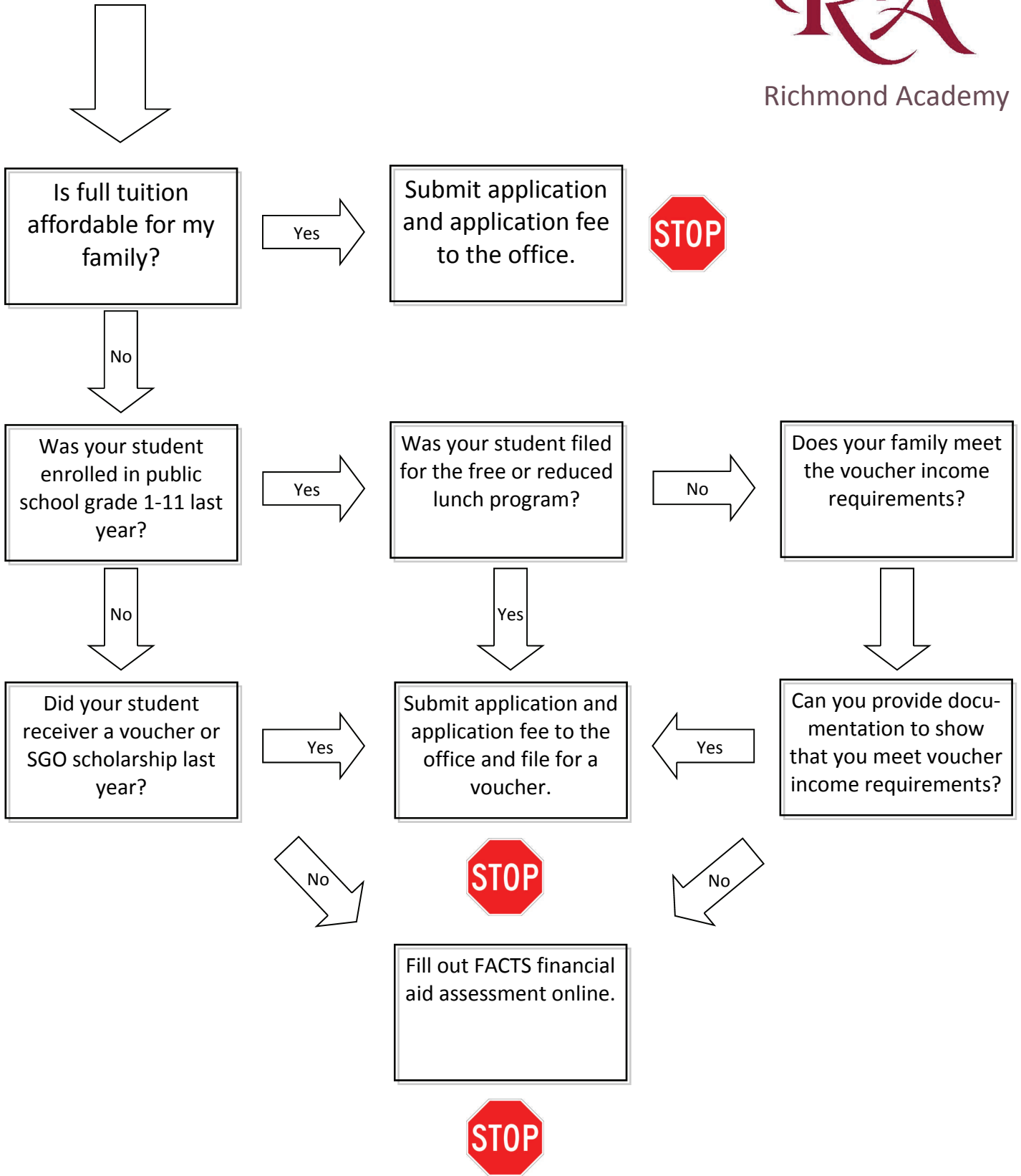


Which Tuition Payment Plan is Right for You?



Financial Aid

Richmond Academy is known in the community for already having the lowest tuition. Each public school student costs tax payers over \$9,000. For every student enrolled in a private school, the tax payer saves at least \$5,000. New state programs now make it even more affordable to enroll. These programs are a win for tax payers and a win for students.

How to apply to RA for financial aid:

1. all programs first come first serve
2. review the Tuition Flow Chart
3. submit enrollment application and referrals
4. submit voucher application if eligible - see below
5. submit financial aid application if needed - see below
6. save school expense receipts for tax deduction on state tax return - see below

State Vouchers

- ◆ From the state of Indiana
- ◆ for students enrolling in grades 1-12 who: were in public school grades 1-12 the preceding year, received a school choice grant the preceding year or received a state voucher the preceding year
- ◆ student must be filed for the free or reduced lunch program, or provide documentation of meeting the following voucher income requirements (income levels are based on Adjusted Gross Income for the household)
- ◆ based on income and family size
- ◆ application made in the office

**Income levels are based on adjusted gross income for the household.*

***This is the same income cap as the Federal Free and Reduced Lunch Program*

****This is based on 150% of the cap for Federal Free and Reduced Lunch*

Persons in house-hold*	Annual household income limit for a 90% Choice Scholarship**	Annual household income limit for a 50% Choice Scholarship***
1	\$21,257	\$31,885
2	\$28,694	\$43,041
3	\$36,131	\$54,196
4	\$43,568	\$65,352
5	\$51,005	\$76,507
6	\$58,442	\$87,663
7	\$65,879	\$98,818
8	\$73,316	\$109,974
Each Addition	+\$7,437	+\$11,156

Classic Financial Aid

- ◆ From Richmond Academy
- ◆ for all families who feel they cannot afford full tuition and are not eligible for a state voucher
- ◆ tuition is either the assessed amount from FACTS or 50% of the regular tuition rate whichever is greater
- ◆ a Pre-K student under financial aid will attend ½ days
- ◆ financial aid does not include extended learning
- ◆ based on income and family size
- ◆ application made online at factstuitionaid.com (\$25 fee paid online to FACTS)
- ◆ once online application is completed, current tax forms will need to be faxed in and verified
- ◆ final assessment will be available within one week of forms being faxed

School Choice Grants

- ◆ From School Granting Organization (SGO)
- ◆ for financial aid seeking families enrolling in kindergarten
- ◆ School Choice Grant recipient may be eligible for a school voucher the next year
- ◆ based on income and family size

State Tax Deduction

- ◆ for all current and future families
- ◆ up to \$1000 for private school non-reimbursable expenses